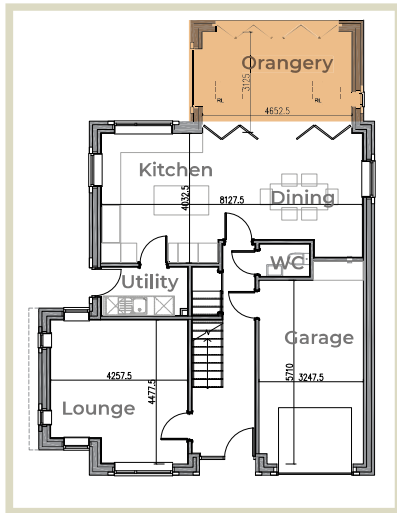


THE HEALEY

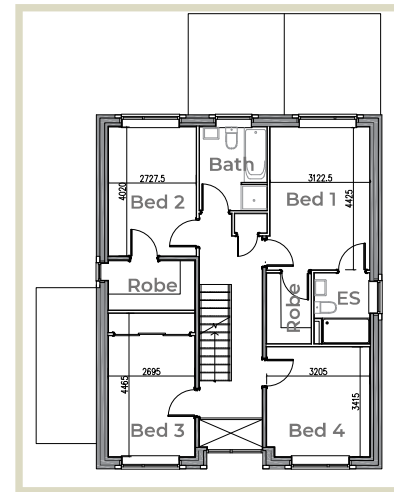


Ground floor

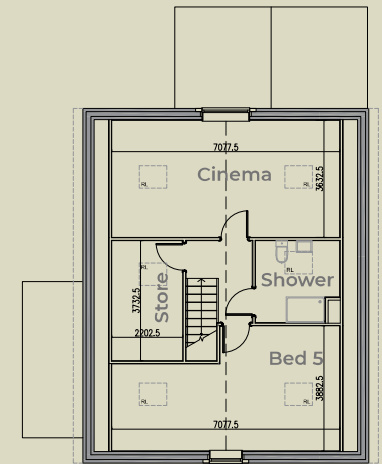
This house type resembles The Roche where an open-plan layout to the rear links the kitchen, dining and the optional orangery creating a central space for family activities. The lounge also situated to the front side of the unit and the utility room and WC situated in the central core. Similarly you will find an integrated garage to this unit as well.

First floor

The master bedroom offers an en-suite and walk-in wardrobe, whilst the second bedroom provides a larger walk-in wardrobe with the option to be upgraded to an additional en-suite. The family bathroom features both a bath and a shower for added convenience.



Second floor



The second floor of this home here differs from that of The Roche where the roof rotates 90 degrees changing the layout and window setting out.