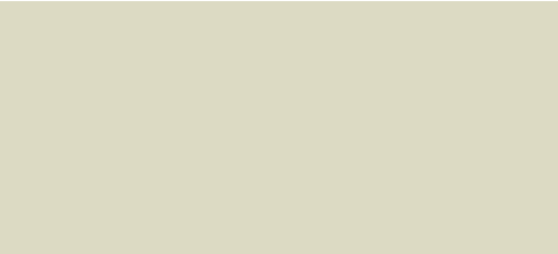
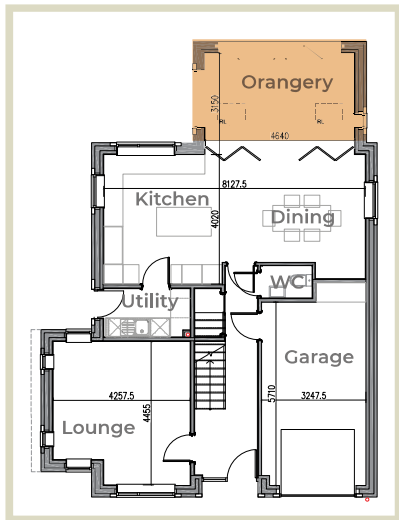


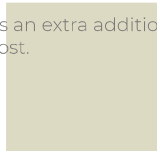
# THE ROCHE



## Ground floor

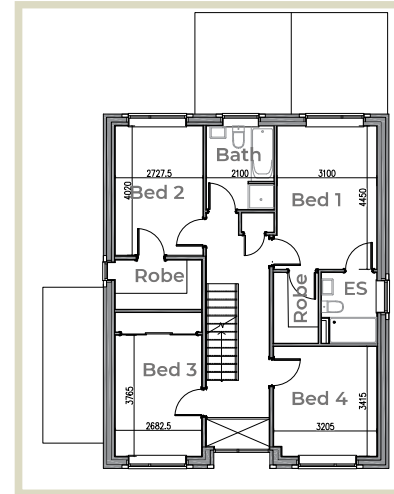
Explore the ground floor of this house type, where an open-plan layout effortlessly links the kitchen, dining area, and orangery, creating a central space for family activities. The lounge offers a cosy retreat, and the utility room ensures practical living with efficient storage and laundry facilities. A well-appointed WC adds convenience, while the integrated garage completes the ensemble.

Here the orangery is an extra addition and can be added at an extra cost.

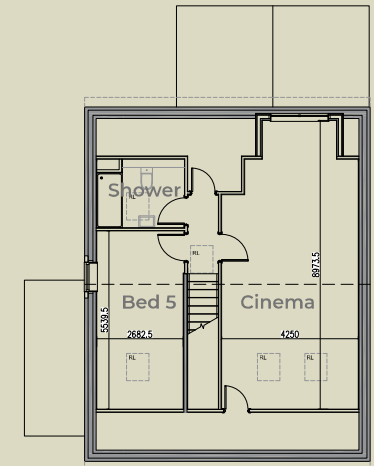


## First floor

On this floor you will find; The master bedroom which offers an en-suite with a walk-in wardrobe, while one other room provides a larger walk-in wardrobe. The family bathroom features both a bath and shower for everyday convenience. Balancing practicality with comfort, this floor defines a home suited for modern living. All W-I-W can be converted to en-suite bathrooms.



## Second floor



The second floor of this spacious home also provides another bedroom with an en-suite as well as a large cinema room overlooking the rear of the property.