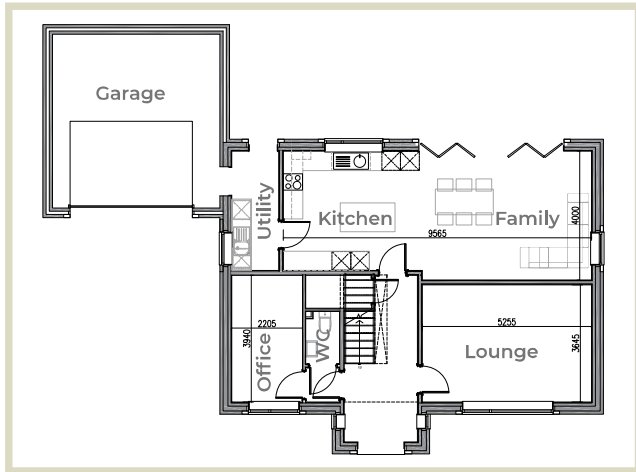


THE WARDLE

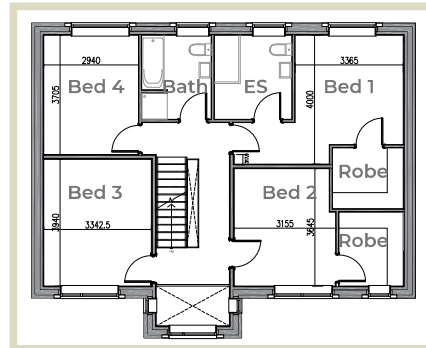


Ground floor

The open-plan layout seamlessly connects the kitchen, dining area, and family room, creating a hub for family activities and entertaining. The lounge provides a cosy retreat, while the utility room ensures practicality with efficient storage and laundry facilities.

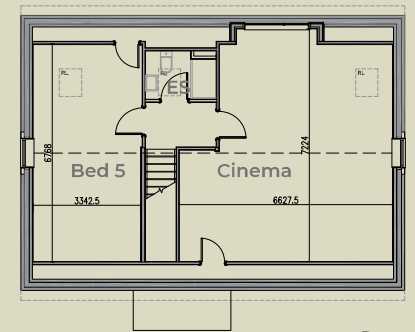
A well-appointed WC adds convenience, and the adjacent office offers a dedicated workspace. Completing the ensemble, the garage to the side combines functionality with easy access while providing additional storage.

First floor



Explore the first floor of this practical home, featuring four bedrooms, including two walk in wardrobes while the master bedroom comes equipped with an en-suite also. The family bathroom is with a bath and shower, ensuring convenience. This floor strikes a balance between functionality and comfort, making it the ideal home for everyday living. All W-I-W can be converted to en-suite bathrooms.

Ascend to the second floor, revealing additional versatile spaces within this home. Bedroom 5 offers a private retreat, complemented by a convenient shower room for added functionality. The loft space is further enhanced by a dedicated cinema room, providing an entertainment haven for movie enthusiasts or a versatile space for various uses. This floor expands the possibilities of your living space, creating a residence that caters to both practical needs and leisurely pursuits.



Second floor